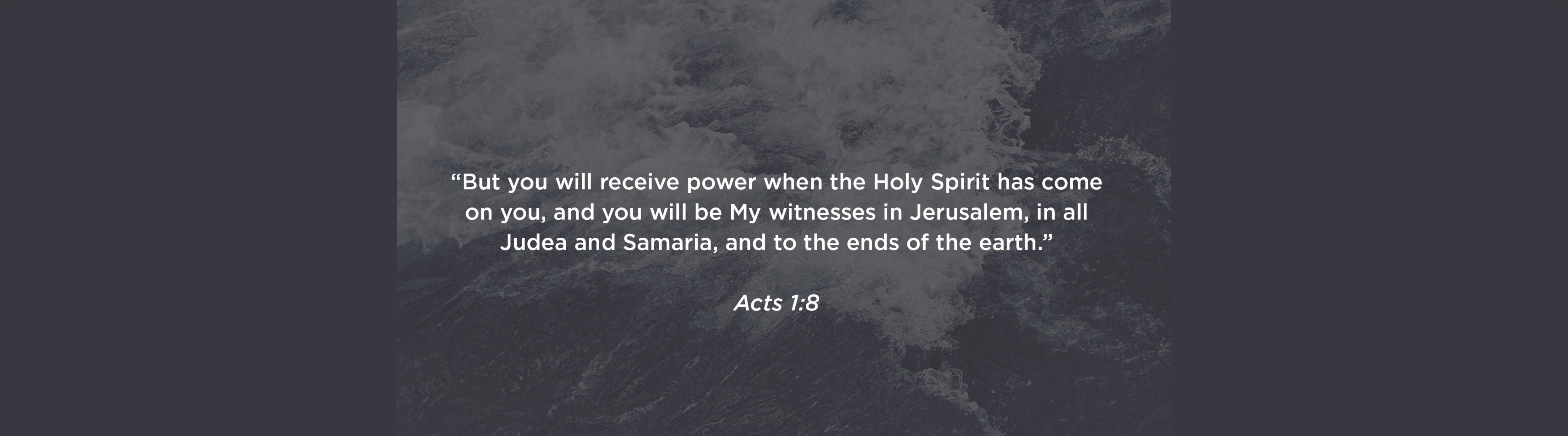




WATER'S EDGE

SUNDAY



“But you will receive power when the Holy Spirit has come on you, and you will be My witnesses in Jerusalem, in all Judea and Samaria, and to the ends of the earth.”

Acts 1:8

An aerial photograph of a river with white water rapids, showing turbulent water and foam. The image is dark and serves as a background for the text.

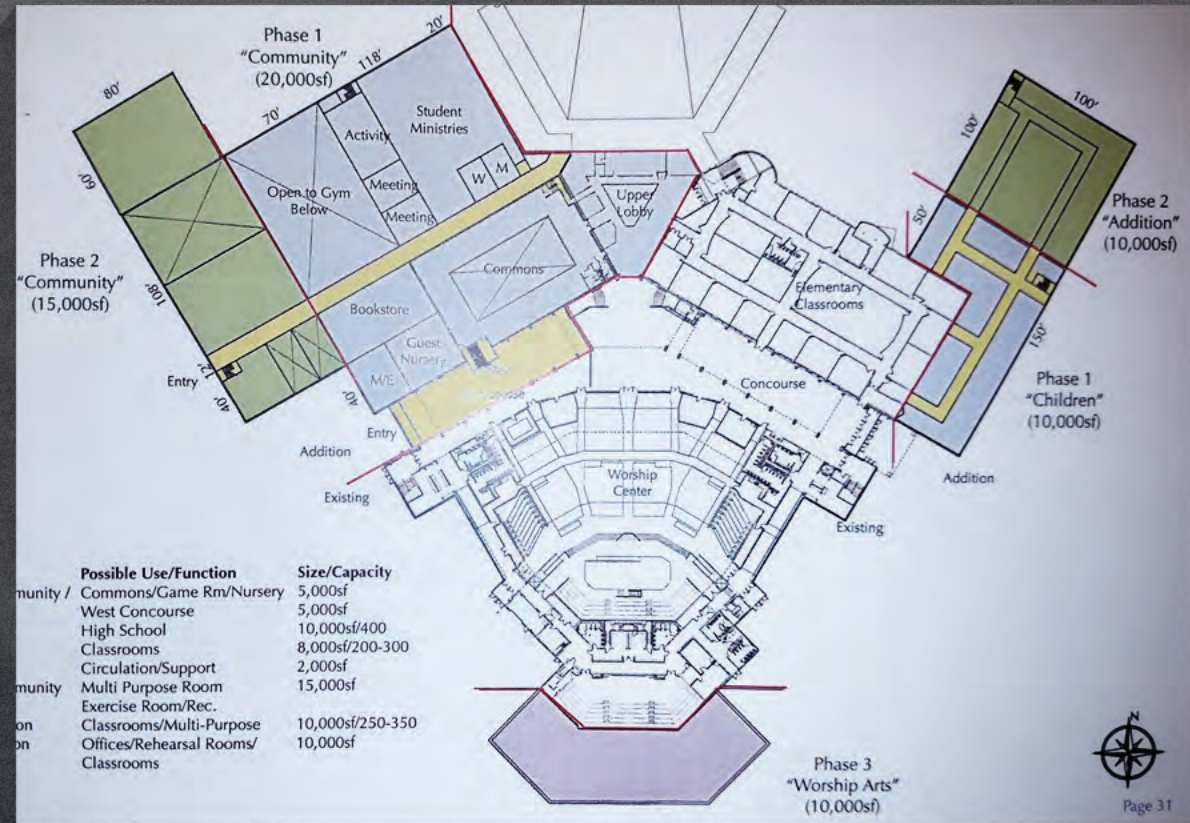
Acts 1:8

Stronger at home is stronger away.

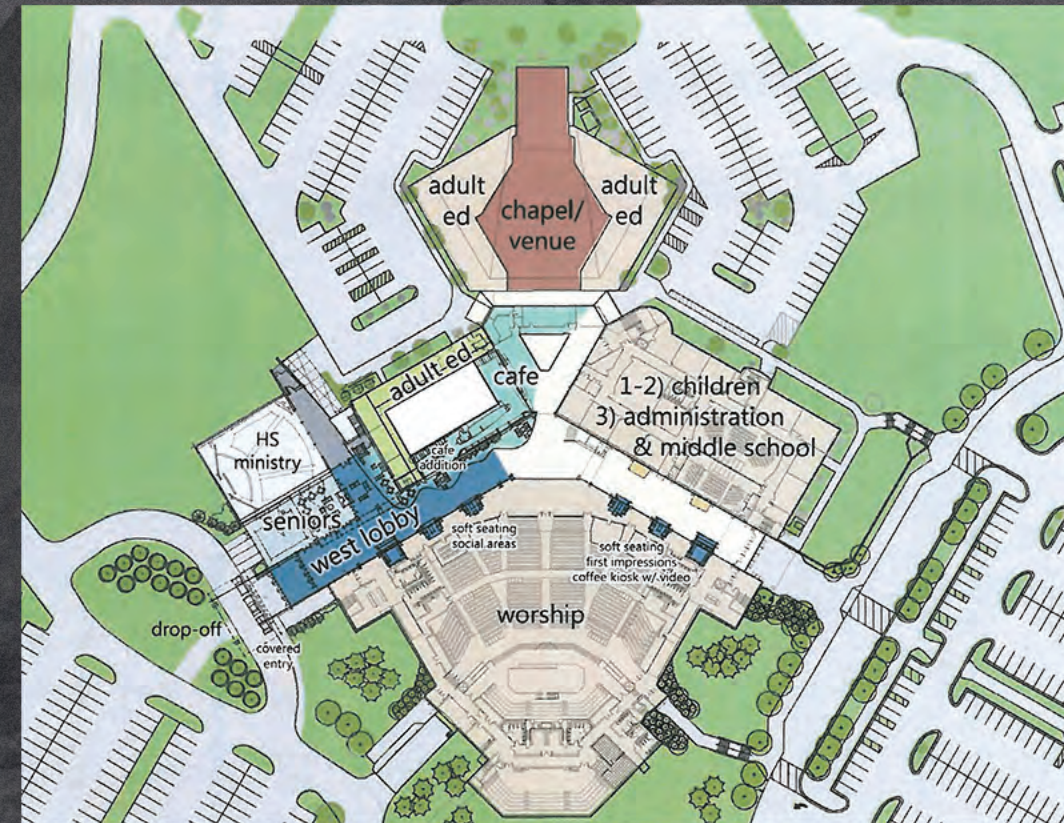
#StrongerHomeStrongerAway



2001



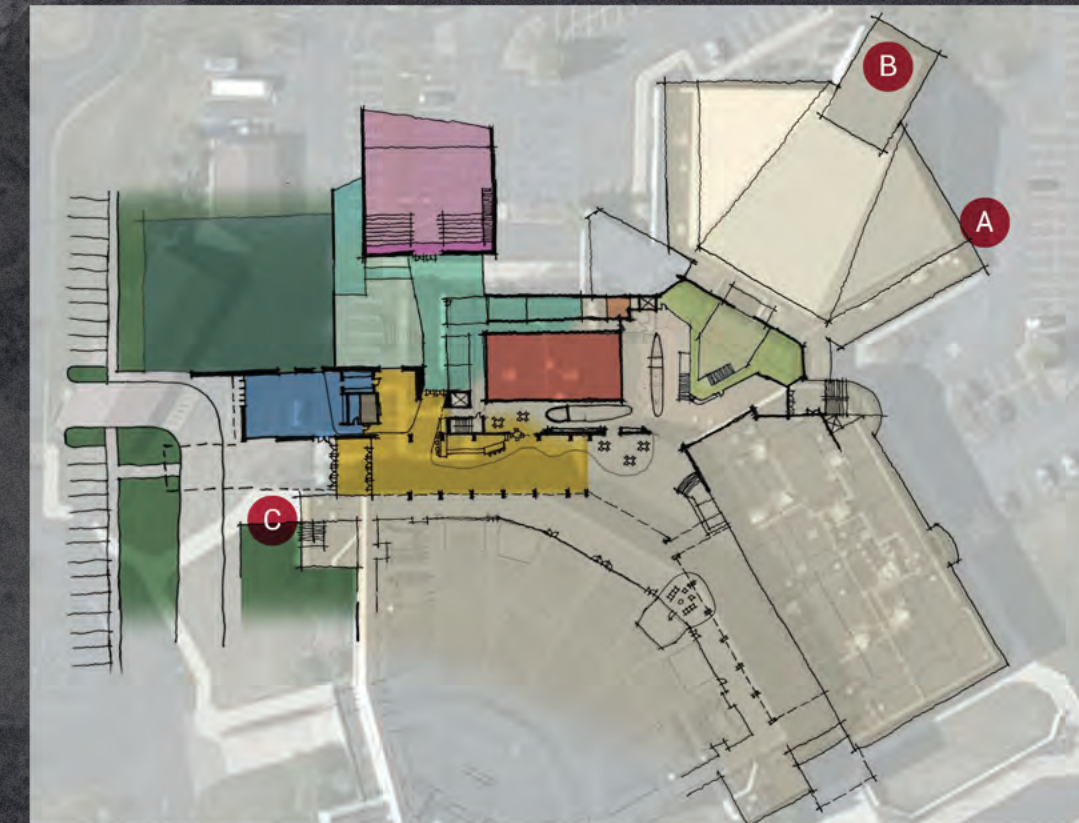
2010

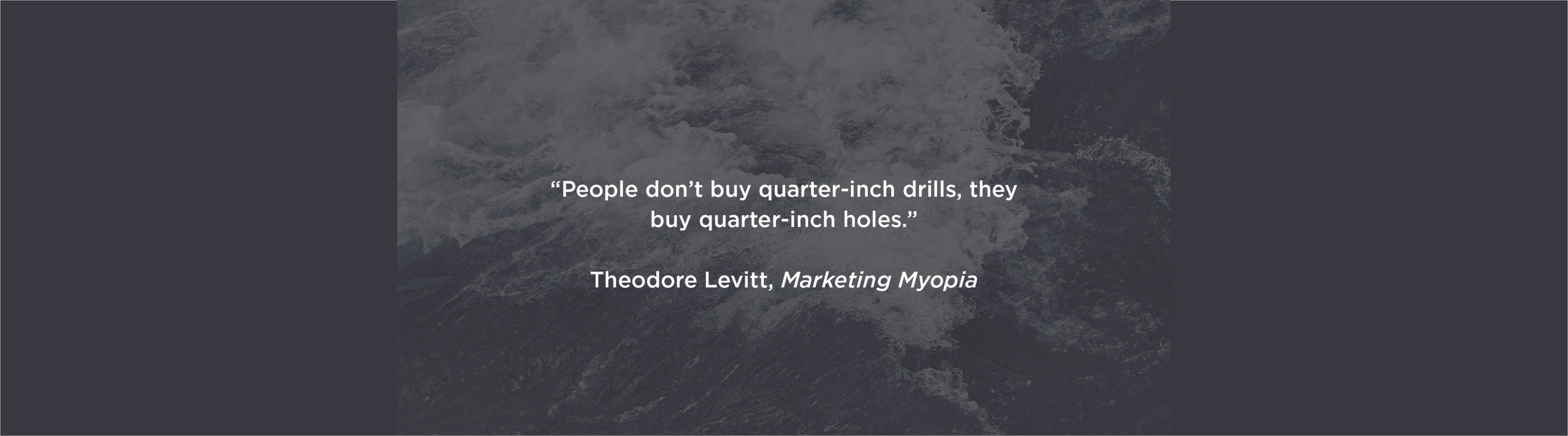


2012



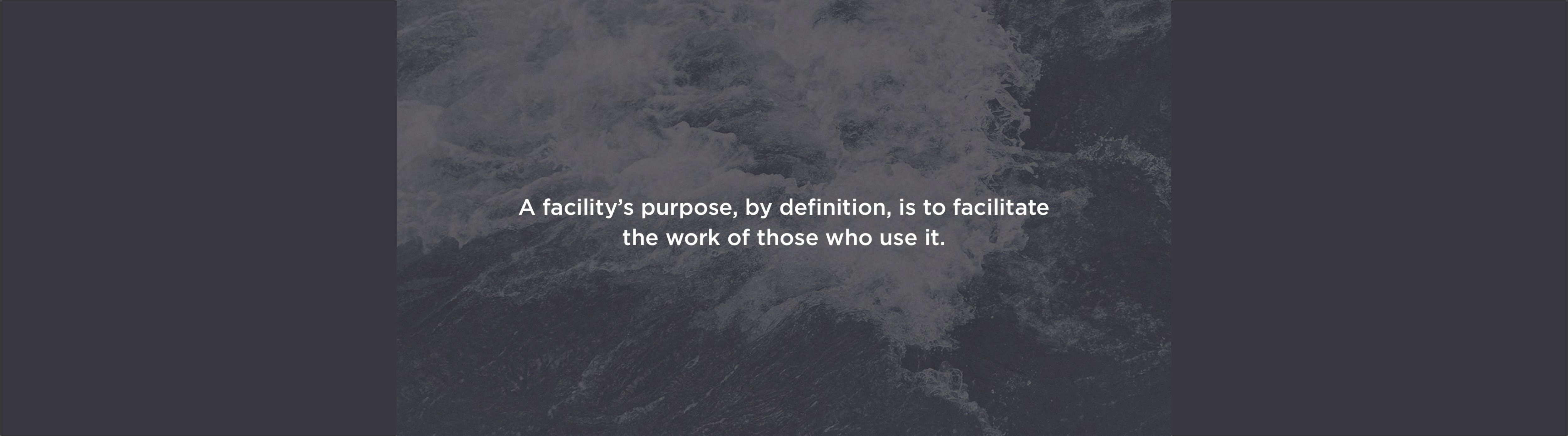
NOW



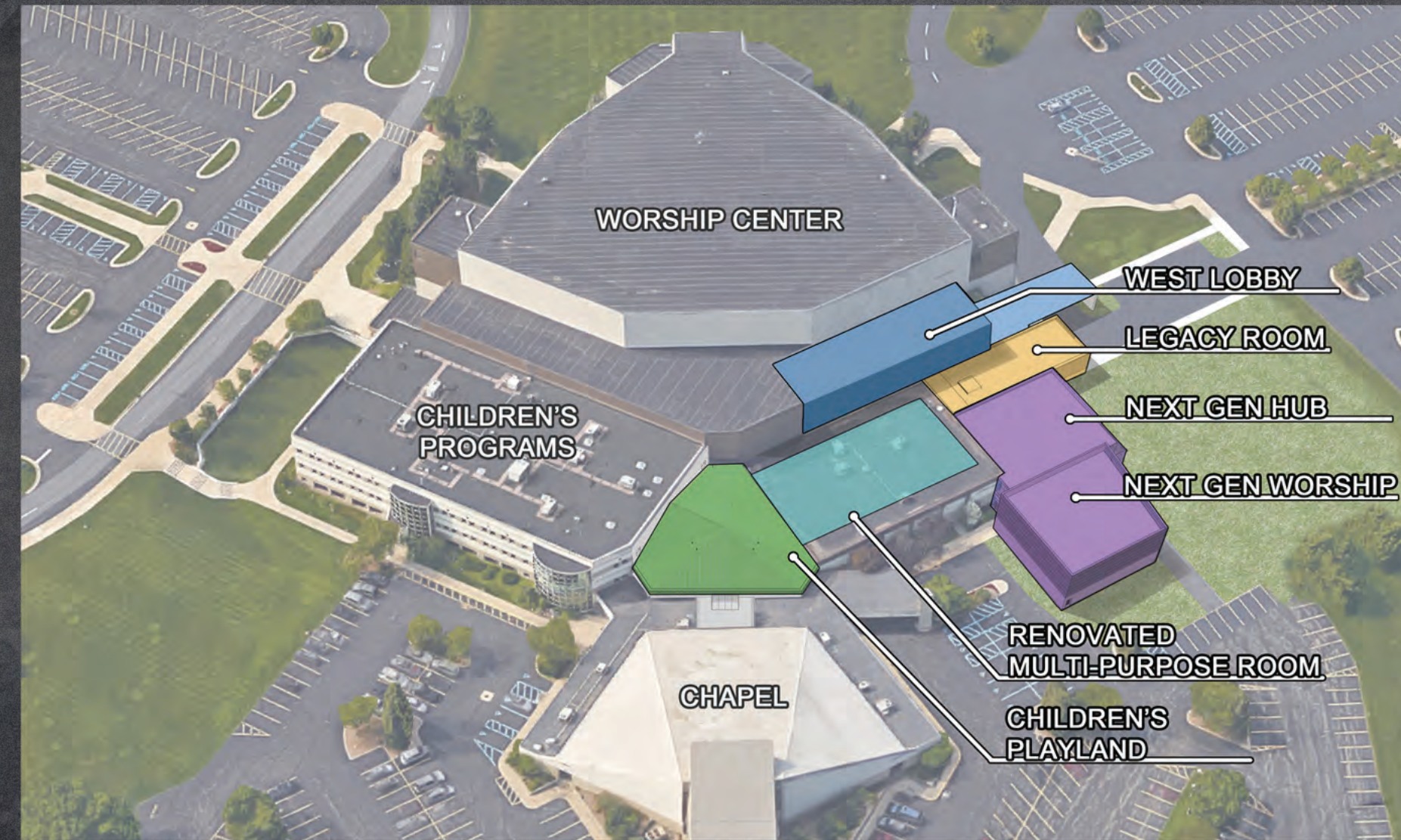
An aerial photograph of a rugged coastline with dark, jagged rocks and white, foamy waves crashing against the shore. The image is in grayscale and serves as a background for the text.

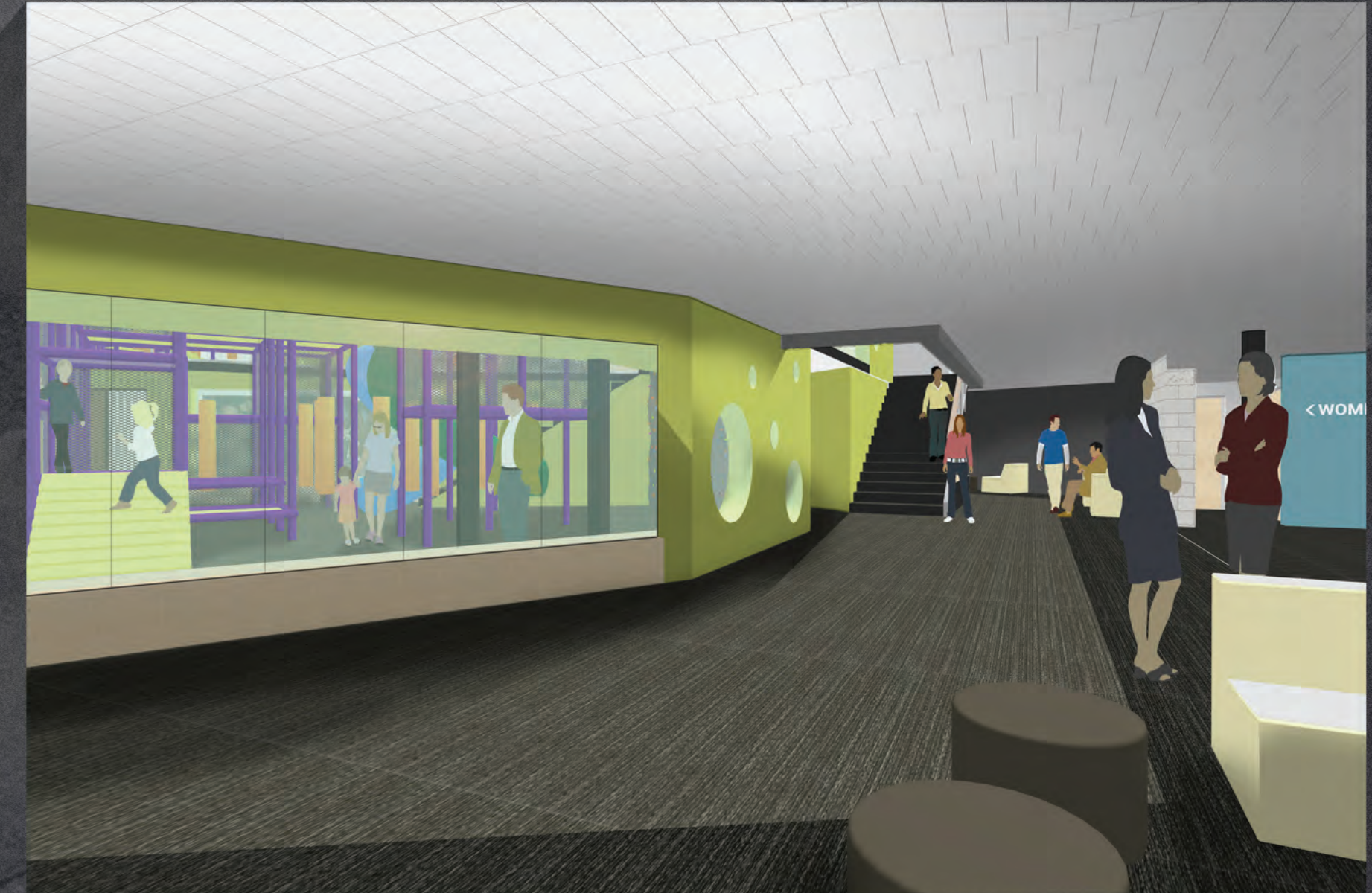
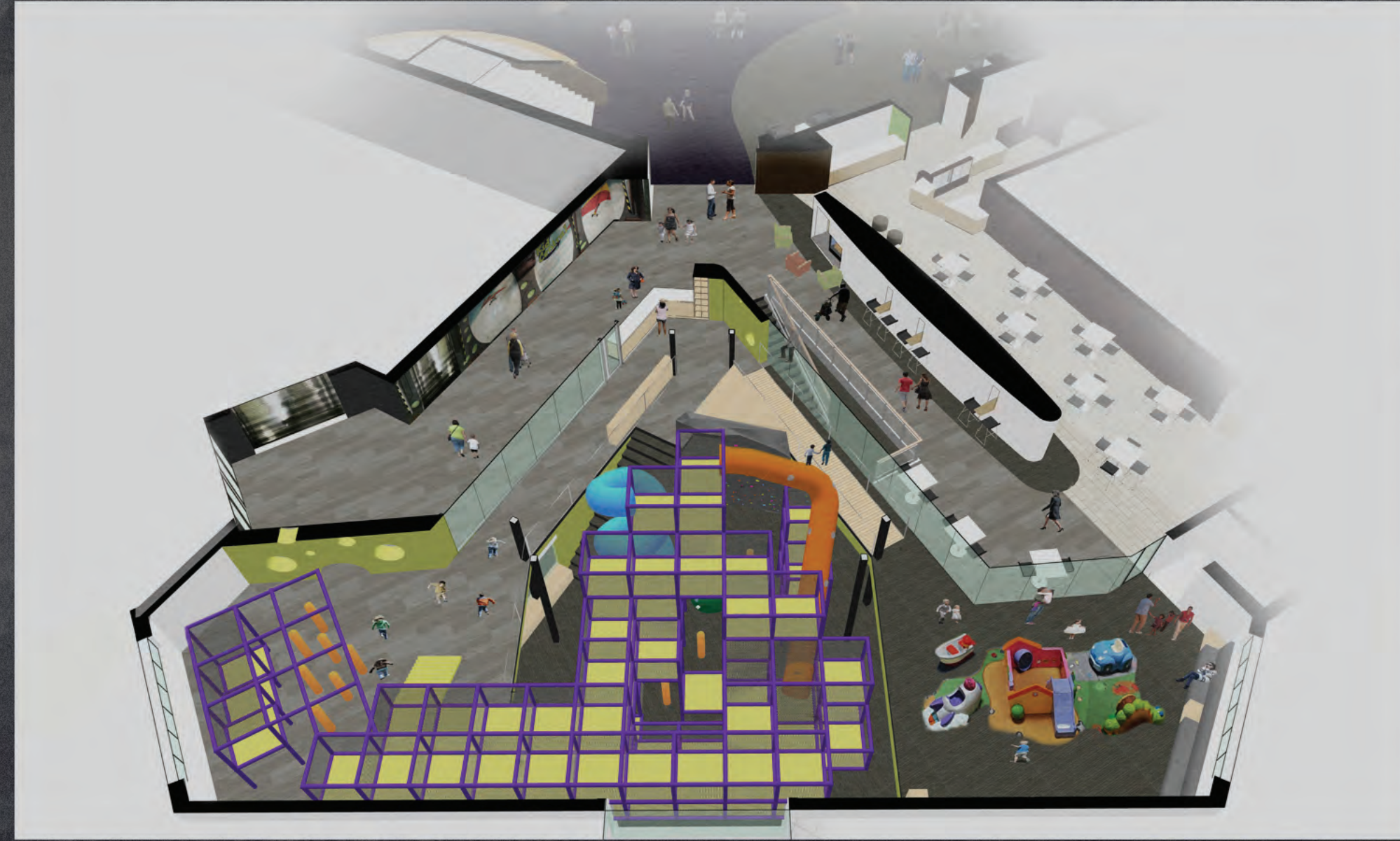
“People don’t buy quarter-inch drills, they
buy quarter-inch holes.”

Theodore Levitt, *Marketing Myopia*

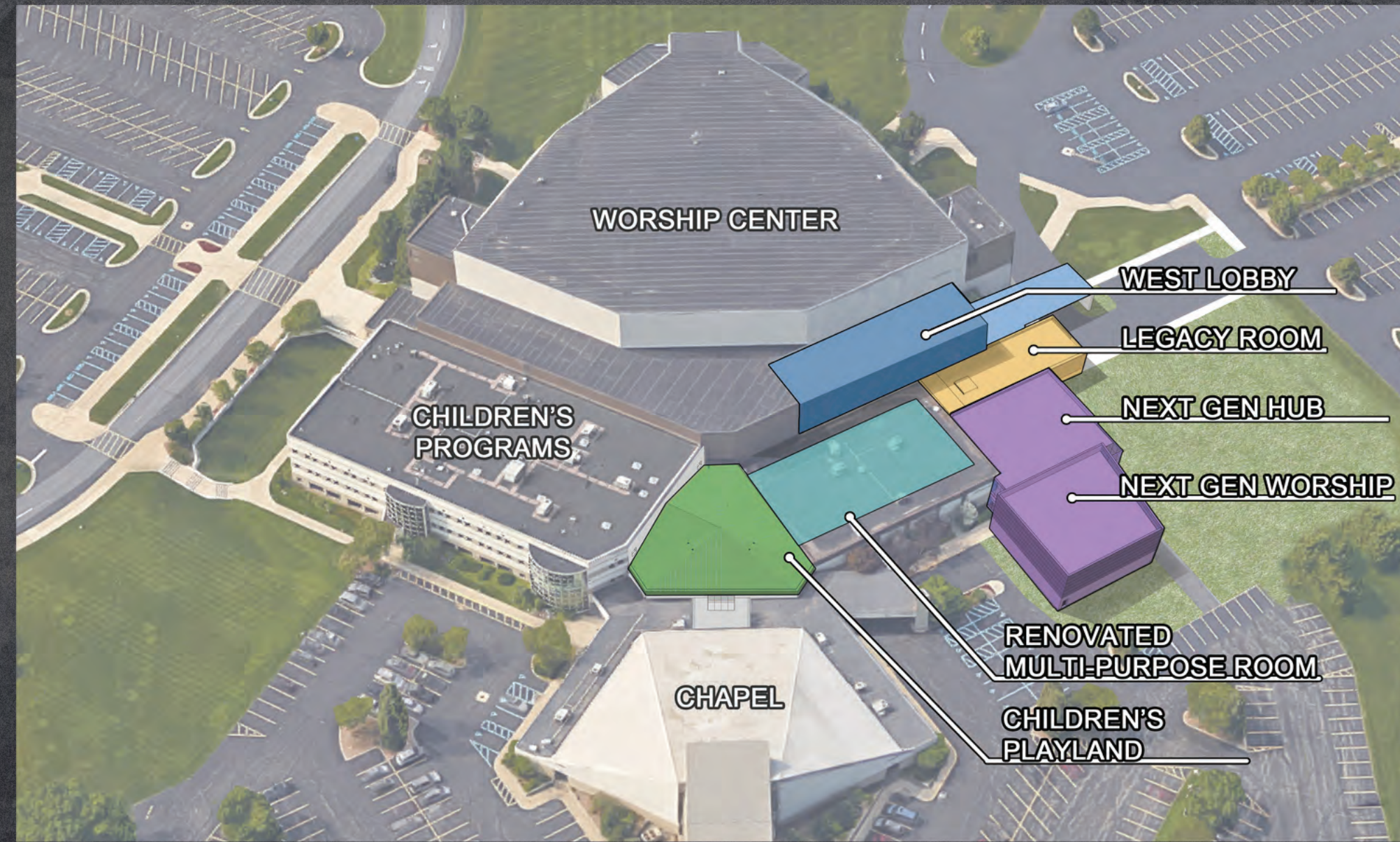
An aerial photograph of a river with rapids, showing white water and dark rocks. The image is overlaid with a dark, semi-transparent layer. Centered on this layer is a white text quote.

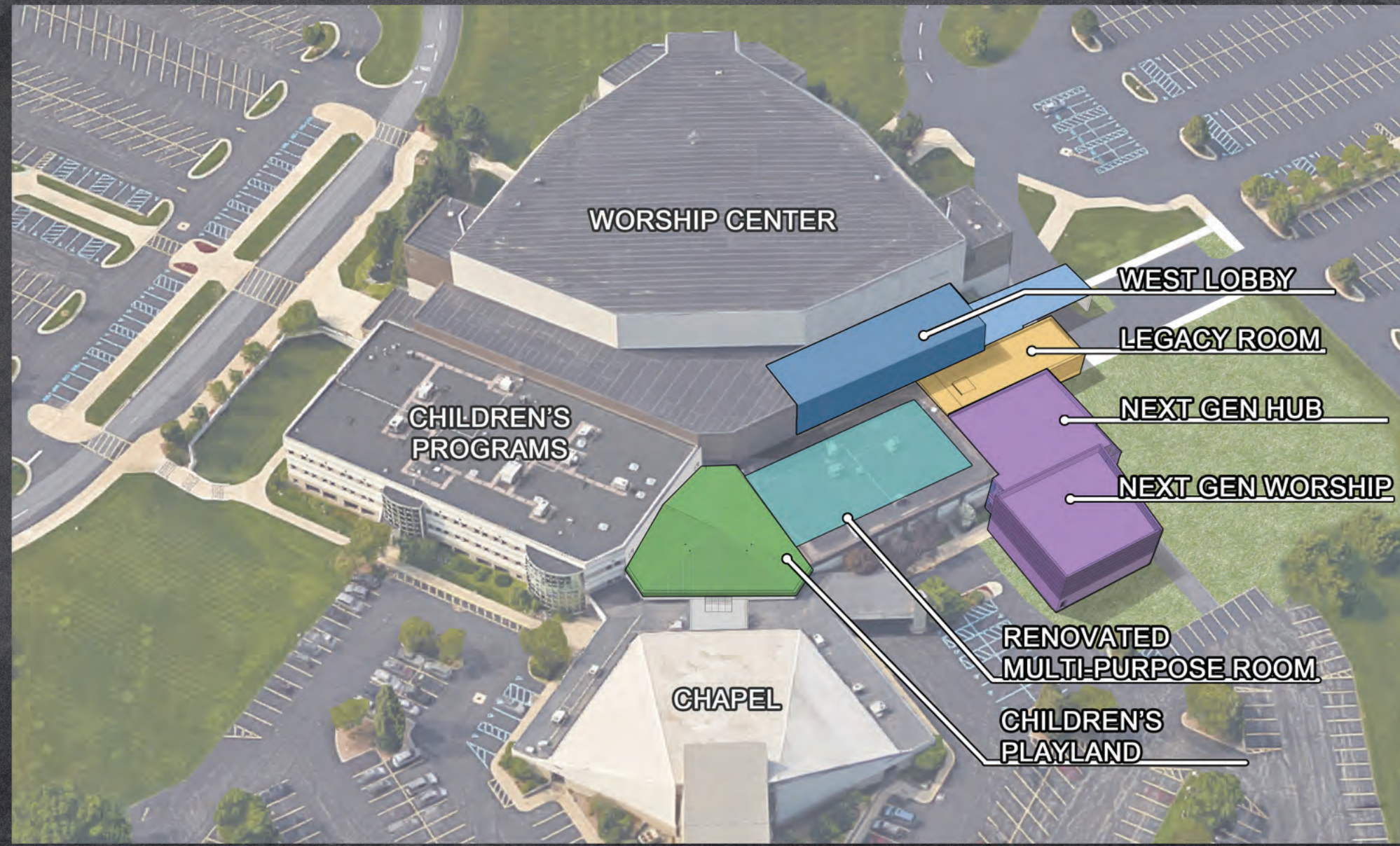
**A facility's purpose, by definition, is to facilitate
the work of those who use it.**













An aerial photograph of a river with white-water rapids, overlaid with a dark semi-transparent layer. The text is centered on the image.

How much is it going to cost?

Can we afford it?



Total Home & Away Cost
\$9.2 million

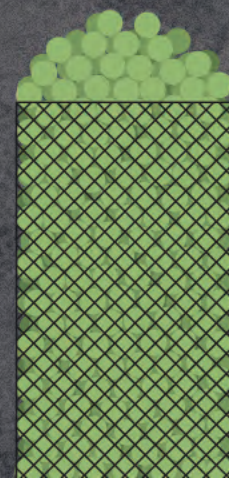
Maximum Expected Debt
\$4.2 million

Capital Stewardship Goal
\$7 million

Our History

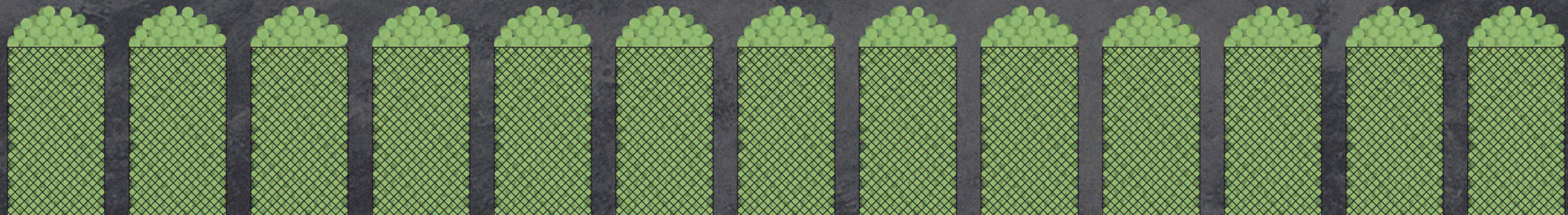
Whenever Central has retooled at home, we've become strong away.

When we retool at home, people only see the expense, they don't see the investment that keeps on giving; they don't see the gift that keeps on growing...



44%







WATER'S EDGE
AWAY

Central
LA ROCA



Central
INDONESIA



Central
CAMBODIA



Central



SIR SONG ER

HOME
& AWAY

